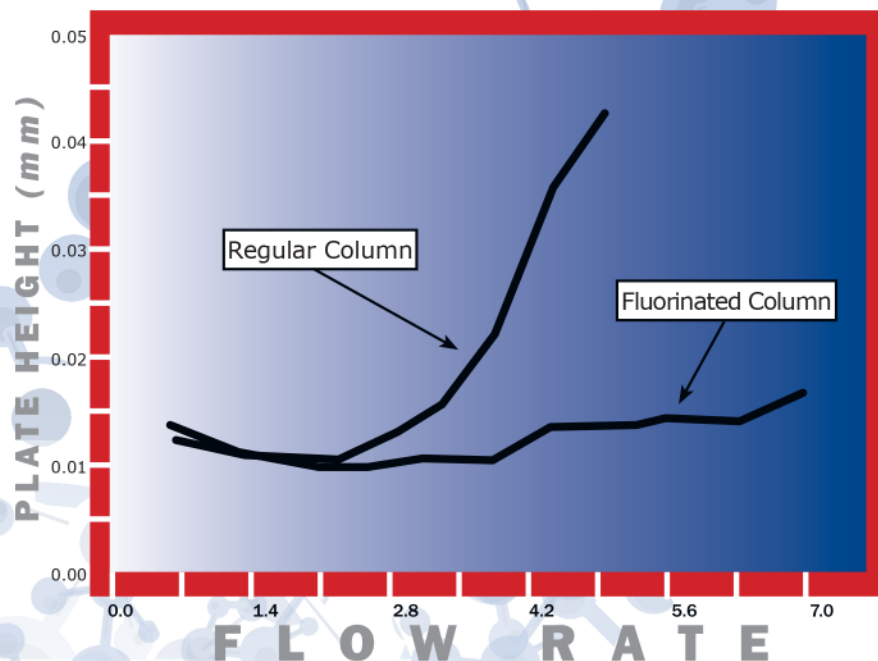


Fluorinated GPC Columns

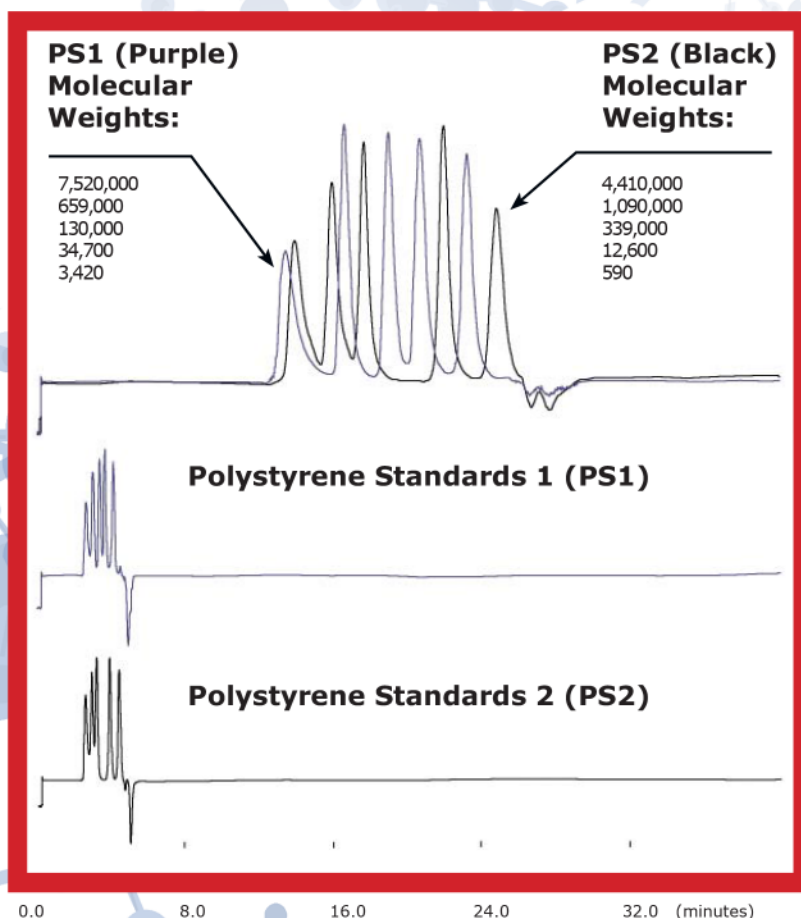
Reduced Adsorption
High Resolution
High Speed

van Deemter Curves

Unlike traditional columns, Jordi Fluorinated columns maintain high efficiency at increased flow rates. The van Deemter Curve shows that plate counts decreased only slightly for the Fluorinated at flow rates as high as 7.0 mL/min. Thus separations can be performed at high speed without sacrificing resolution!

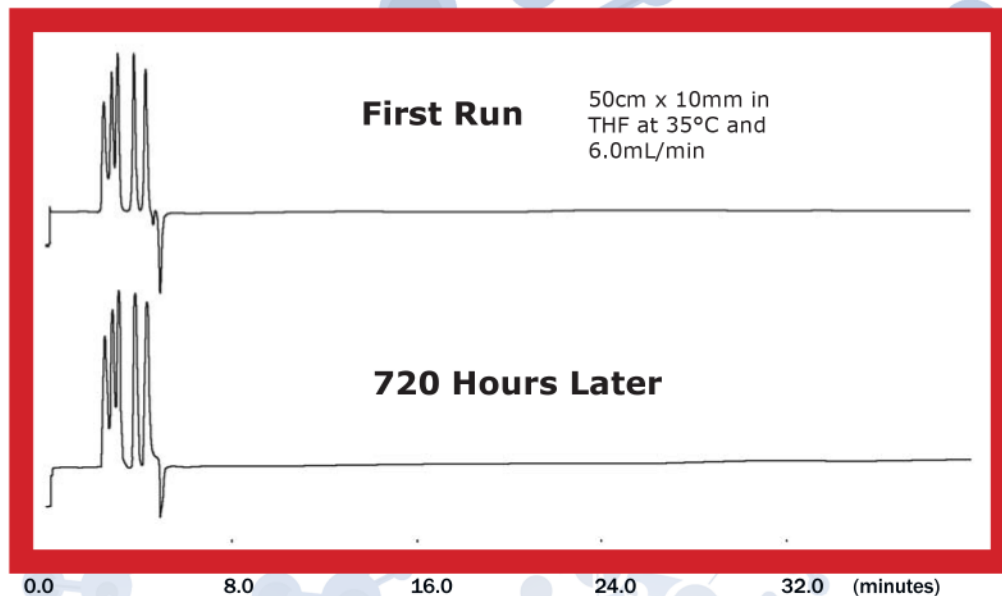


Polystyrene Standards



Jordi Gel Fluorinated column 50 cm x 10 mm in THF at 35°C and 1.0 mL/min (top) and 6.0 mL/min (bottom two), showing resolution of all 10 standards at a high flow rate.

Durability

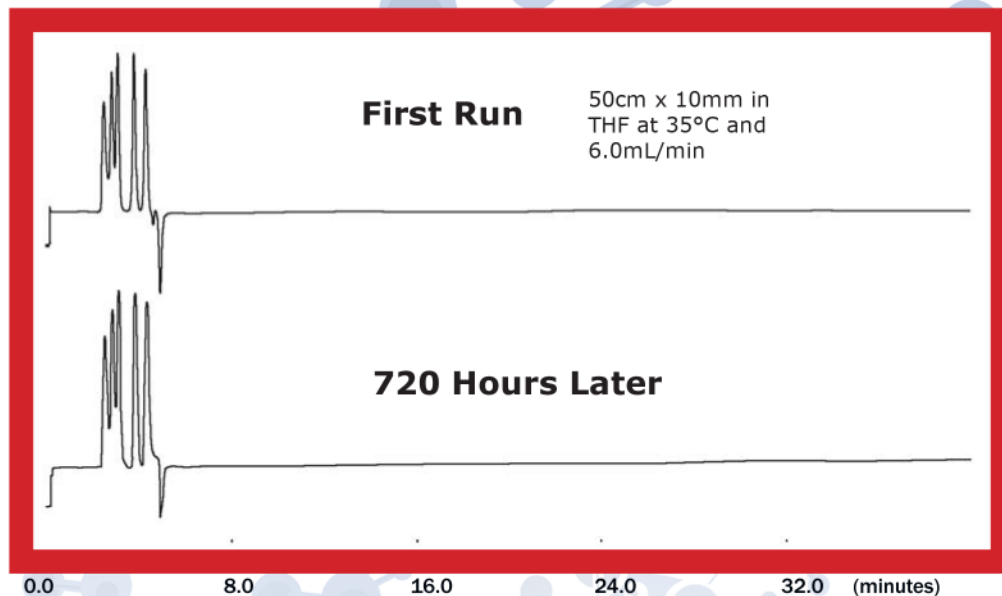


Jordi Fluorinated columns are long lasting due to the 100% DVB polymer backbone. The above chromatograms show the F.I.A.S.H. after 720 hours of continuous use at 6.0 mL/min and still going strong.

Try the Fluorinated for yourself. Columns or Bulk Gel are available in porosities ranging from 100-10⁵Å and all column sizes.

Call or email us for help selecting the product which is right for you.

Durability



Jordi Fluorinated columns are long lasting due to the 100% DVB polymer backbone. The above chromatograms show the F.I.A.S.H. after 720 hours of continuous use at 6.0 mL/min and still going strong.

Try the Fluorinated for yourself. Columns or Bulk Gel are available in porosities ranging from 100-10⁵Å and all column sizes.

Call or email us for help selecting the product which is right for you.