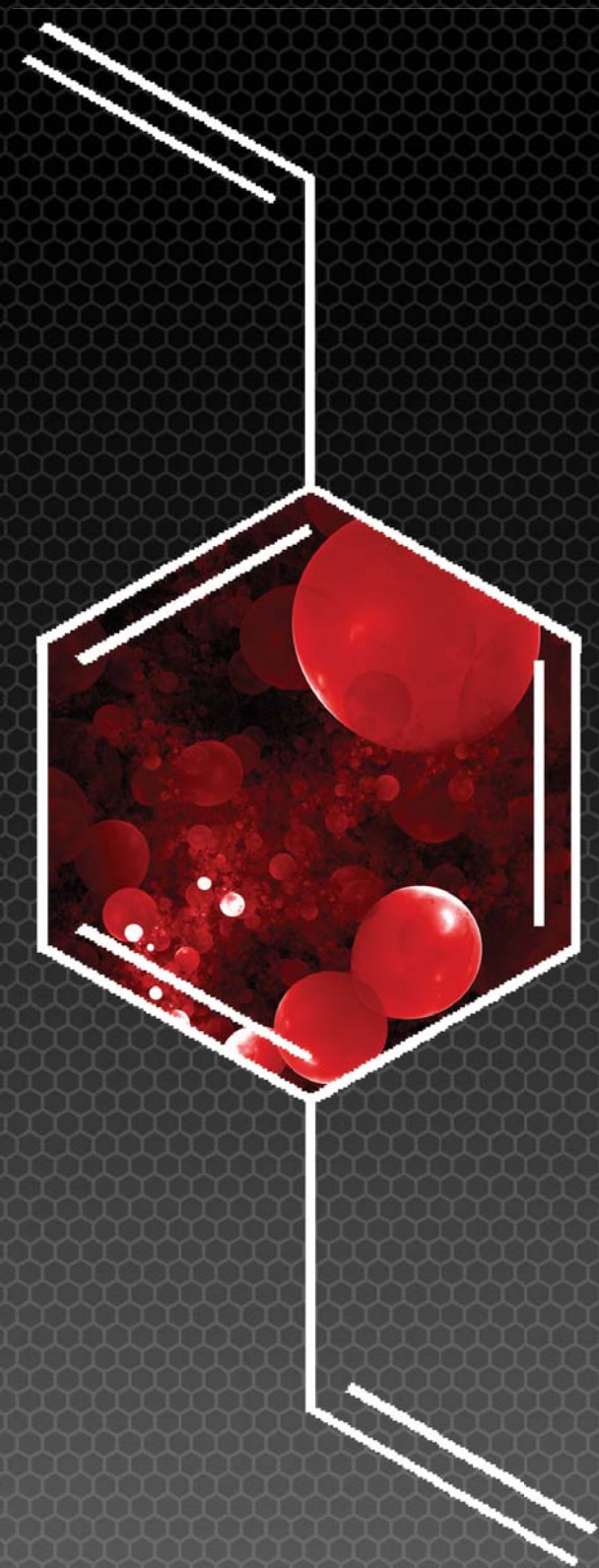


DIVINYLBENZENE

Material Solutions. Uncompromising Integrity.



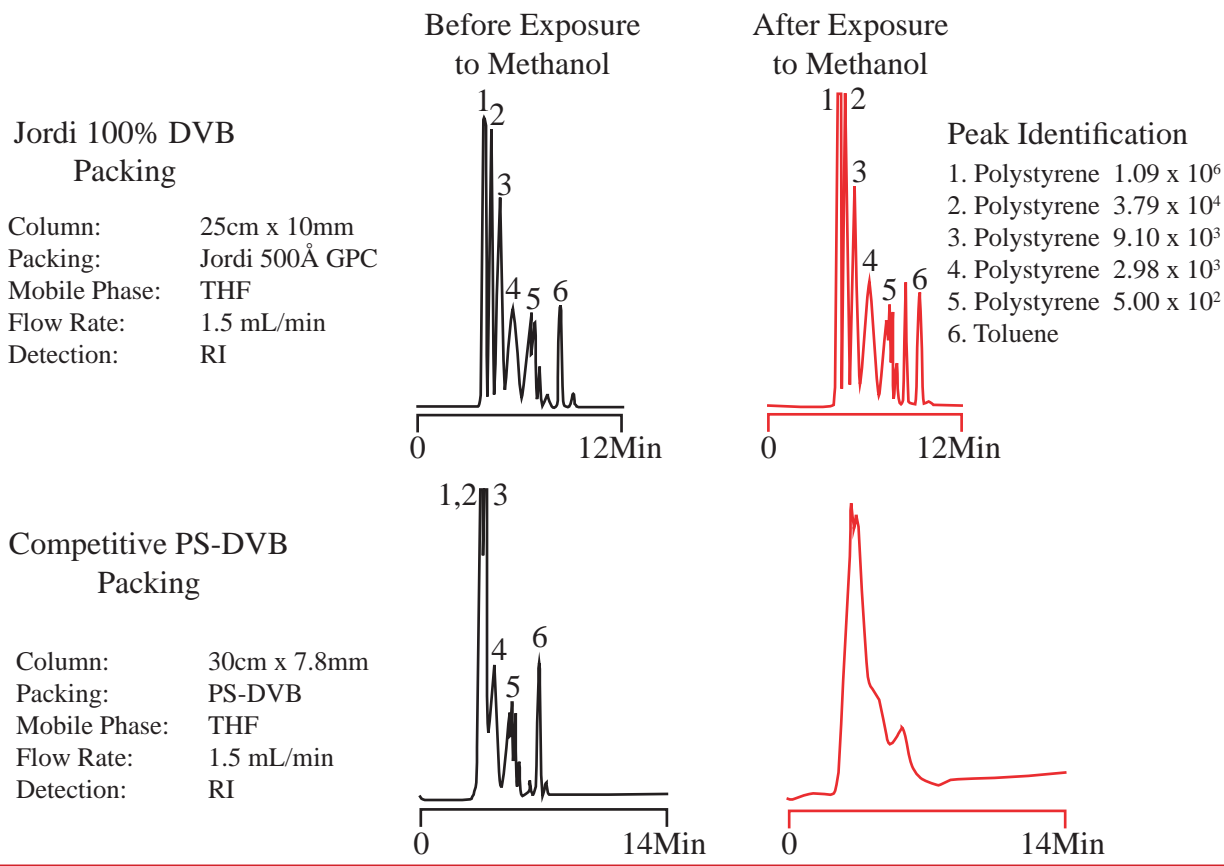
JORDI Gel DVB Columns



Jordi's 100% Crosslinked
Polymeric Column

Jordi Labs manufactures a unique line of GPC columns featuring a 100% divinylbenzene (DVB) highly crosslinked backbone. Jordi DVB columns offer unsurpassed strength and durability as compared to conventional GPC columns, which typically contain silica-based or polystyrene-DVB stationary phases. Our patented DVB chemistry provides a stationary phase that exhibits versatile solvent compatibility and performs well across the entire pH range.

Jordi's 100% DVB Packings Tolerate a Wide Range of Solvents

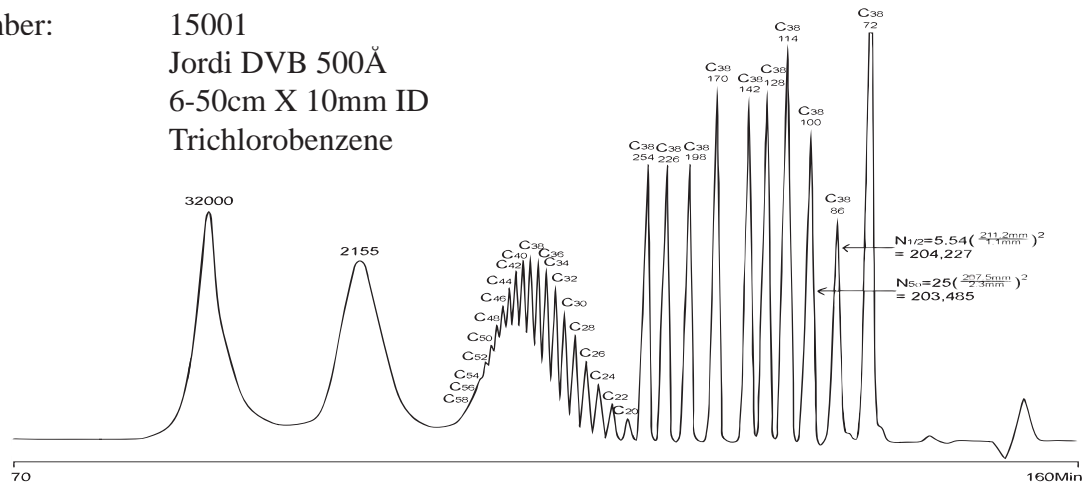


Advantages of Jordi Gel DVB Columns

- Stable up to 150°C
- 0-14 pH Stable
- Stable up to 30,000 psi
- Compatible with Nearly all Organic Solvents
- Longer Column Life
- No Shrinking or Swelling

Jordi Gel DVB columns produce highly linear calibration curves, and they offer high plate counts and pore volume for sharper peaks and superior resolution.

Part Number: 15001
 Packing: Jordi DVB 500Å
 Column: 6-50cm X 10mm ID
 Solvent: Trichlorobenzene



Molecular Weight Range

Up to 400 million

Available GPC Porosities

100Å, 500Å, 10³Å, 10⁴Å, 10⁵Å, Mixed Bed, Solid Bead

Column Dimensions

Jordi is pleased to discuss the opportunity for custom column dimensions

250 x 10 mm (standard), 500 x 10 mm, 300 x 7.8 mm, 250 x 4.6 mm, 150 x 4.6 mm

JORDI PORE SIZE SPECIFICATIONS	
Description	MW Range
GPC Solid Bead	2,000-400,000,000
GPC 100Å	<100-5,000
GPC 500Å	<100-10,000
GPC 10 ³ Å	<100-50,000
GPC 10 ⁴ Å	100-100,000
GPC 10 ⁵ Å	10,000-10,000,000
GPC Mixed Bed	100-10,000,000

Jordi Labs provides some of the finest GPC products on the market, backed by over 25 years of research and development. Our 100% DVB columns are available with 9 different surface chemistries to meet virtually any application. Jordi Labs constantly strives to create and integrate innovative column technology for the benefit of chromatography science and most importantly, all of our valued customers.

We encourage you to call Jordi today to discuss your application. Jordi engages in routine method development projects, which often involve very complex polymer systems. We have the experience; the resources; the polymer expertise and the utmost dedication to solving even the most challenging polymer separation. Let Jordi help you find the GPC solution that suits your needs.

